

Major Release Information

Virtual Studio Manager – VSM

Version 2021-1

Author: AK / Tü
Last updated: 2021-09-27
Release Date: 2021-09-03

Included Components (**bold**: updated since last release)

- **Release Information 21-1 (this File)**
- CommTrace_2-02
- vsmDiscover-2.2.13
- vsmEventImport-1.0.6
- vsmGadgetServer - 2_0308
- **vsmGadgetServer.Net - 5.6.1.202**
- **vsmGear-B0030**
- **vsmPanel - 3.4.12.14**
- vsmRemoteMnoplProxy-1.0.16
- vsmSnap - 3.2.9.0
- **vsmStudio-B2351**
- **vsmWebPanel-3.4.11.4**
- **vSnmp - 2.0.0.23**
- **vTimeSync - 4.4.9.0**

Major Release 2021-1

VSM Release 2021-1 introduces new features in vsmStudio, vsmGadgetserver and vsmPanel, continued preparations for coming functional enhancements and important stability fixes.

vsmStudio Build 2351

- New Feature: DMV Module.
- New Feature: Rulebooks for DMV text fields.
- New Feature: Media Essence Filter
- New Feature: Flow state view.
- Enhancement: Physical layers view - Signal assignment can be reordered by drag and drop in.
- Enhancement: Signal assignment can be dragged and drop moved between physical/network layers respectively.
- Enhancement: New Sync message display in top right corner of the VSM UI after config has been loaded to signal a correct synchronization between servers.
- Enhancement: Tieline routing behaviour is now executed in a strict cascaded sequence
- Enhancement: Physical Layer View now shows crosspoints of attached devices without signal assignment. Feature availability depends on utilized control protocol.
- Enhancement: Enable Grouping for Views
- Enhancement: Default Blind Source Assignment

vsmGadgetServer 5.6.1.202

New drivers, bugfixes and enhancements for:

- AJA Generic Rest API
- Arista MCS
- Arista EApi Dynamic Vlan Assignment
- Audinate Dante
- Axon ACP2
- BlackBox Boxilla
- Lawo v__matrix
- ClearCom HCI
- Ember+Provider
- GrassValley KFrameX
- GrassValley LDK2
- Imagine Communications SNP Manager
- NMOS IS-05 Client
- Panasonic HD Cam Interface
- OpenGear OGP
- Riedel RRCS
- Simple REST Client
- Snell Rollcall
- TAG Multiviewer
- Techex MwCore
- Tektronix Prism
- Utah RCP3

vsmPanel 3.4.12.14

Various Fixes and Improvements, including

- PPM behaviour
- Browser Engine Stabilization

vsmWebPanel 3.4.11.4

Various Fixes and Performance Improvements

Details

vsmStudio – DMV Module

vsmStudio features a newly designed deep integration with Lawo’s vm_dmvm distributed Multiviewer. The new DMV module is tailor-made to embrace the unique IP cluster multiviewer architecture and embeds it into the overall broadcast workflow.

After a basic configuration inside the DMV with the number of desired heads and unique input, the new module reads the DMV configuration and automatically creates all needed signal paths inside the vsm configuration.

During the operational workflow the module automatically manages the various layers inside the DMV cluster and presents the user with a single step “Source to PiP” routing workflow.

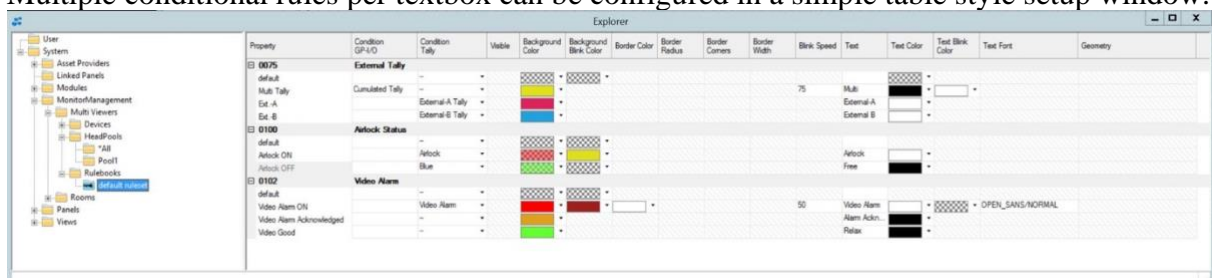
The DMV module manages all configured DMV head processors in one or more dynamic head pools. This allows to dynamically attach head processors to a desired destination during runtime and share a single processor among multiple possible destinations.

With this software release the vsmStudio DMV module supports the pure 2110 mode of Lawo’s distributed multiviewer cluster.

vsmStudio – DMV Rule Book

The new DMV Rule Book feature is an IFTTT engine that allows to drive the text boxes of multiviewer heads in Lawo’s vm_dmvm distributed multiviewer. Tallies and/or GPO triggers can be used to trigger text, color or other property changes of the text box.

Multiple conditional rules per textbox can be configured in a simple table style setup window.



Property	Condition	Condition	Visible	Background	Background	Border Color	Border	Border	Border	Border	Blink Speed	Text	Text Color	Text Blink	Text Font	Geometry
External Tally																
0075	default	External Tally	*													
	Multi Tally	Cumulated Tally	*								75	Multi				
	Ext. A	External A Tally	*									External A				
	Ext. B	External B Tally	*									External B				
Artlock Status																
0100	default	Artlock	*									Artlock				
	Artlock ON	Artlock	*									Free				
	Artlock OFF	Blue	*													
Video Alarm																
0132	default	Video Alarm	*													
	Video Alarm ON	Video Alarm	*								50	Video Alarm				
	Video Alarm Acknowledged		*									Alarm Actn.				
	Video Good		*									Relax				

vsmStudio – Media Essence Filter

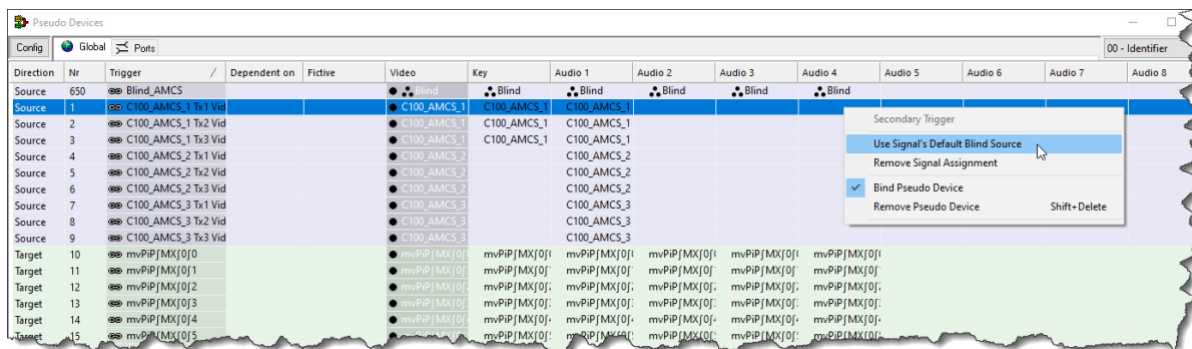
To address the increasing demand for 2110-40 data routing in hybrid routing workflows, VSM added the ability to merge and split SDP files.

With this new feature vsmStudio is capable to combine embedded ANC transport – *SDI / 2022-6 / Grouped SDP for 2110-20/40* - as well single essence transport – *separated SDP for 2110-20/40 streams* – into a joint single step operational routing workflow. To use the feature a valid Pseudo Device license is required.

For more details refer to the [vsm knowledge base](#)

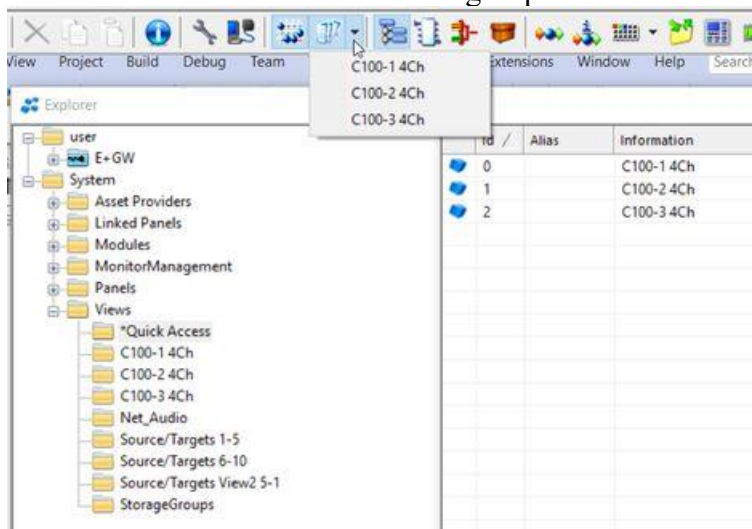
vsmStudio – Default Blind Source Assignment

This new functionality allows to simply assign a blind source in the pseudo device dialog.



vsmStudio - Enable Grouping for Views

The “Views” list is now sorted into groups to increase visibility.



Known Issues

vsmStudio - Room Tally

The Room Tally functionality intends to introduce a simplified way to assign tally on a per-room basis. This feature is currently visible in a pre-release state. It is neither completed nor supported and **subject to change without notice. Please do not use!**

vsmStudio – Bridging

The “Bridging” functionality intends to introduce a possibility to connect VSM systems. This feature is currently visible in various areas in a pre-release state. It is neither completed nor supported and **subject to change without notice. Please do not use!**

vsmStudio – Induce Labels

When using the *Induce Labels* function, do not enter a “.” into the label field. As soon as you enter a “.” you can’t open the edit field anymore.

vsmPanel – “Jump To” function

When viewing a matrix on a panel which can use the "jump to" function this function displays no options after a consistent panel runtime of > 5 hours.

Restarting the panel brings back the options and "jump to" works again.

vsmPanel – Scheduler csv export

If exporting scheduled events to .csv from scheduler an empty file is created.

vsmPanel – Storage List selection

If selecting any storage disk in the storage LIST and then enable or disable a GPO via control button, the storage disk selection disappear.

LBP Panels – Japanese Labels

When using Japanese labels with LCD keys, labels in the second row will be cropped.



Software Download

To enable you to update systems with the latest version, this release can be downloaded from our online repository. As always, **before updating, backup your system and refer to the changelogs/release notes** of each component to make sure your system can be updated.

Please also make sure to check and understand all changes and especially the known issues listed in the changelogs.

As upgrades may introduce a file format change, which implies incompatibilities of the configuration file of vsmStudio, please make sure to create a backup of your VSM directory before you upgrade.

The download of the final release is available at <https://lawo.com/lawo-downloads/>