

Patch Release Information

Virtual Studio Manager - VSM

Version 2018-1-1

Author: AK
Stand: 2018-12-12
Release Date: 2018-12-12

Changes:

2018-12-12:

- Initial Patch 2018-1-1

Patch Release 2018-1-1 - Changes

This Patch includes various fixes in

- vsmStudio
- vsmGadgetServer (e.g. RTS, Dante)

Please see component changelogs for details.

Whats new in Release 2018-1?

The Ember+ Gateway

With the Ember+ Gateway, we introduce an enhancement to vsmStudio, which allows to connect one vsmStudio install to other separated vsmStudio installs using Ember+. Until now, vsmStudio did already provide control of internal cross points with external instances. With the Ember+ Gateway, vsmStudio now also provides control of internal parameters. Parameters can originate from any control connection consumed by vsmStudio and can be combined individually. The number of Ember+ Gateway connections containing different sets of parameters is limited by license. Ember+ Gateway connections are TCP/IP based.

To get an Ember+ Gateway connection to work, it requires an “asset provider”. Asset providers are “containers” holding custom selections of parameters. For configuration, click the



icon to open the Explorer dialogue, where asset providers are prepared. To share such container with external instances, an Ember+ Gateway connection must be added in the Connection Ports dialogue (see “/Gadgets/VSM”) and must be assigned with the corresponding asset provider (port settings dialogue).

Explorer

- user
 - assets provider 31129
- system
 - asset providers
 - assets provider 18119
 - assets provider 31129
 - assets provider 18119
 - group 17862

Identifier	Description	Inform
WK61	Gain @ M000012F9	Gain @
XE55	Gain Right @ M000...	Gain R
WA92	Link @ M000012F9	Link @
RF07	Mute @ M000012F9	Mute @
RL69	Mute L @ M000012F9	Mute L
PK08	Mute R @ M000012F9	Mute R
TV19	Set Dim @ M00001...	Set Dim
YH09	Set Dim L @ M0000...	Set Dim
EB12	Set Dim R @ M0000...	Set Dim
EU39	Set Mute @ M0000...	Set M
OH76	Set Mute L @ M000...	Set M

Schnittstellen Verwalten

nach Typ nach Ort

- root
 - Gadgets
 - Other
 - X-Switches

Port	Description
010.001.234.068:09000	
127.000.000.001:09015	
127.000.000.001:50000	
Virtual 2	asfdgf
192.168.010.010:08000	GATEWAY
Virtual 1	ROUTER

Ports

- X-Switches
- UMDs and Monitor Splitters
- S101.2 Bus
- Mixer
- Other
- Gadgets
 - Axon
 - FOM
 - McCurdy
 - Ross
 - Snell & Wilcox
 - Vistek
 - VSM
 - Gadget Consumer (EmBER, Ember+)
 - Gadget Provider (Ember+ Gateway)

< Zurück Weiter > Abbrechen Hilfe

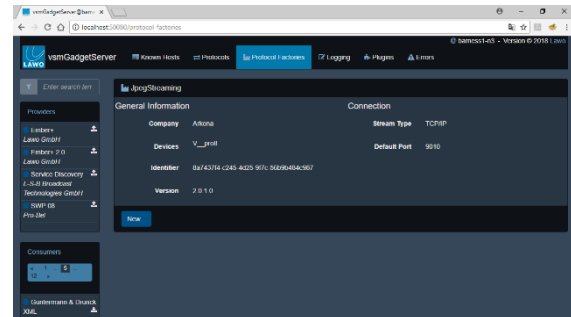
- VSM, Gadget Consumer (EmBER, Ember+)
- ... VSM, Label Exchange
- VSM, Dummy X-Switch
- VSM, Gadget Provider (Ember+ Gateway)
- VSM, Dummy X-Switch

vsmGadgetserver 5.6

vsmGadgetserver 5.6 comes with a fundamental rework of the Web UI. You can now make use of modern browsers on any host and configure the broad range of control connections of vsmGadgetserver from any device without the need for installing and maintaining specific software.

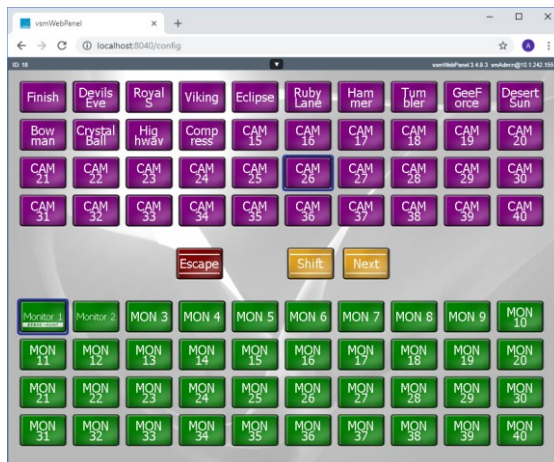
vsmGadgetserver 5.6 bases on the backend of vsmGadgetserver 5.4 and can be seamlessly deployed as an upgrade. Licenses will remain active as well as all configured provider and consumer connections.

For details on installation, configuration, and operation please check the updated manual on our download center.



vsmWebPanel

The touch-operation optimized vsmWebPanel turns a PC or mobile device with a web browser into powerful and flexible VSM software control panel, enabling general control of the broadcast infrastructure from basically everywhere.



vsmWebPanel is not replacing the advanced functionality of a regular vsmPanel, but it closes a gap between highly customizable software panels and rack-mounted pushbutton panels. vsmWebPanel supports all principle “button” functionalities, but no page items.

A current browser compatible with HTML5, CCS3, SVG and WebGL is the minimum requirement, no further software components are necessary.

vsmWebPanel provides an integral user management, which allows to control panel access for specific users, even in dependency on their host IP.

Release Components

This release is provided as ZIP archive containing component packages tested for compatibility. The contained component versions are:

- CommTrace_2-02
- vsmDiscover-2.2.13
- vsmEventImport-1.0.6
- vsmGadgetServer - 2_0308
- **vsmGadgetServer.Net - 5.6.1.17**
- vsmGear-B0027
- vsmPanel-3.4.9.16-Release
- vsmRemoteMnoplProxy-1.0.16
- vsmSnap-3.0.8
- **vsmStudio-B2261-Release**
- vsmWebPanel-3.4.10.2
- vSnmp-2.0.0.12
- vTimeSync-4.4.0.0

Knows Issues

For details about known issues, please refer to the release notes, changelogs or readme files provided within the software packages. Specific attention should be paid on the changes of

- vsmPanel
- vsmWebPanel
- vsmGadgetServer
- vsmStudio.

Software Download

To enable you to update systems with the latest version, this release can be downloaded from our online repository. As always, **before updating, backup your system and refer to the changelogs/release notes** to make sure your system can be updated. Please also make sure to check and understand the known issues in the changelogs.

Download available at <http://www.lawo.com/download>

Best Regards

Axel Kern & Steve Barnes

on behalf of the VSM Team.